

Chapter 10

Crystal Reports

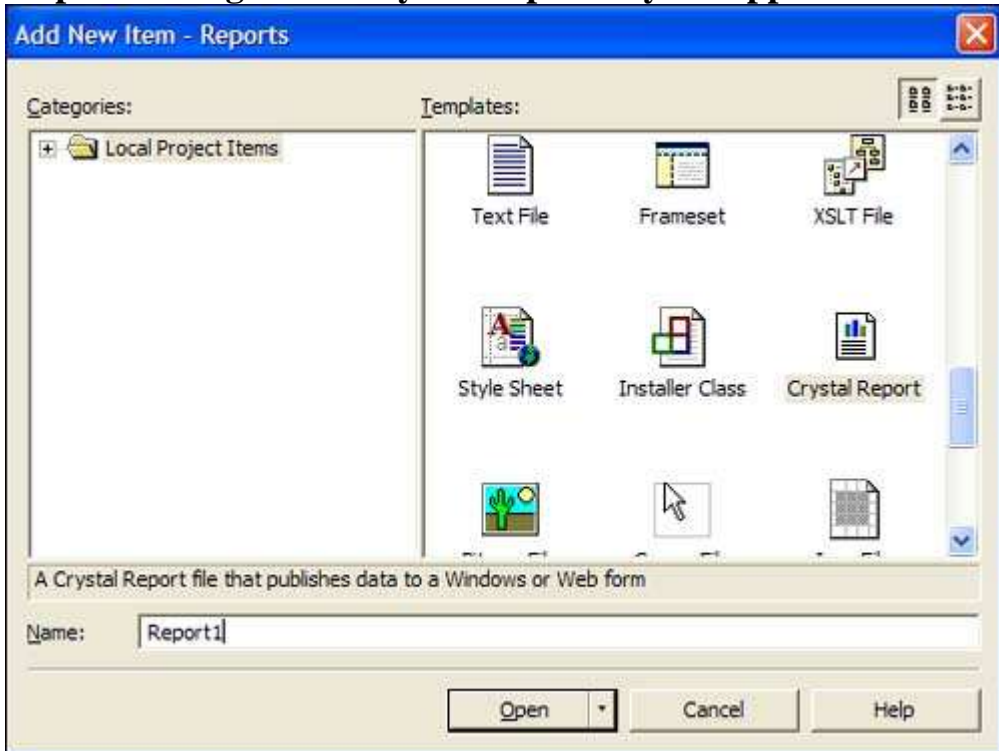
Chapter 10

Crystal Reports

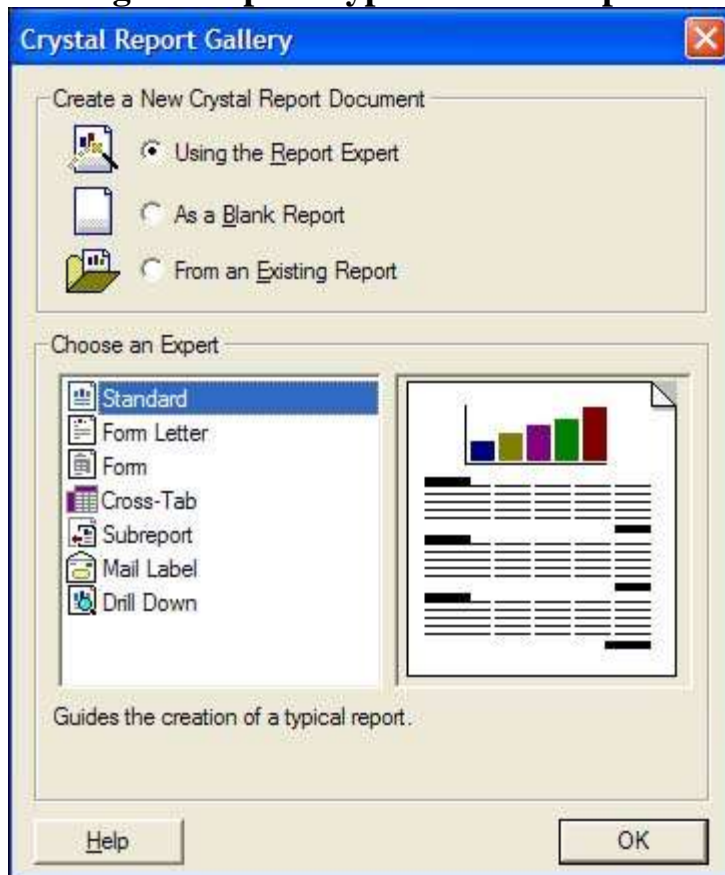
Crystal reports are one of the most useful tools of creating and manipulating reports. In this chapter we show steps of handling crystal reports.

Step 1: Creating the Reports Windows Forms application.

Step 2: Adding a new Crystal Report to your application.



Step 3: Choosing the Report Type from the Report Gallery.

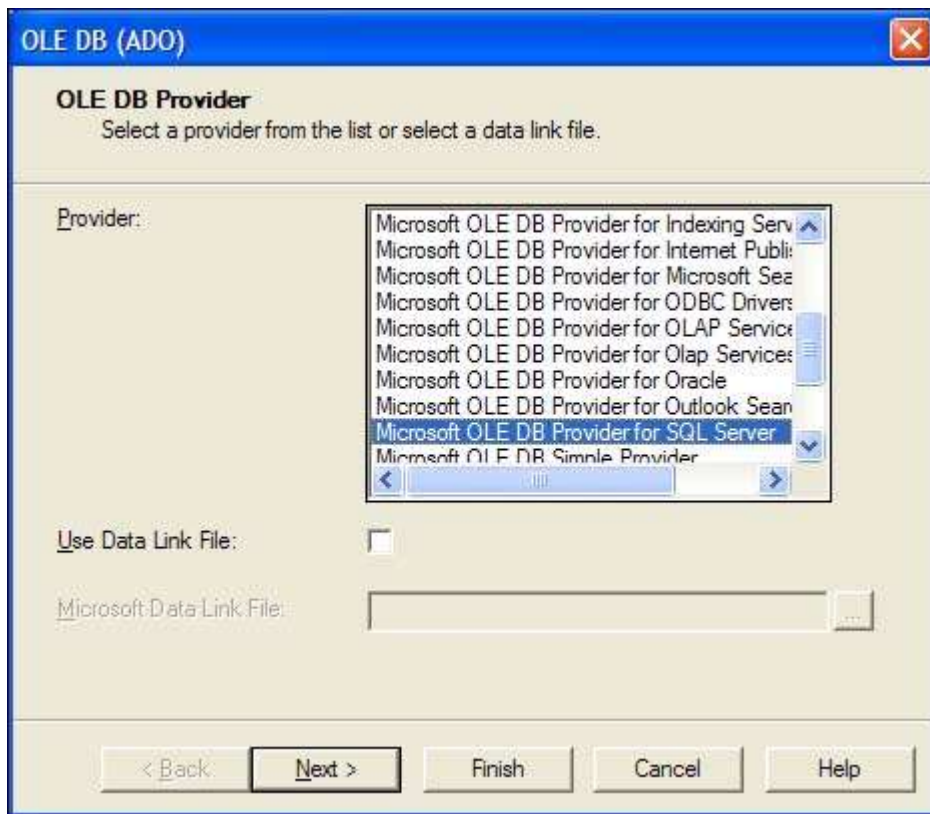


Step 4: defining the connection parameters

This can be established before step 2, by dragging the table from the server explorer.

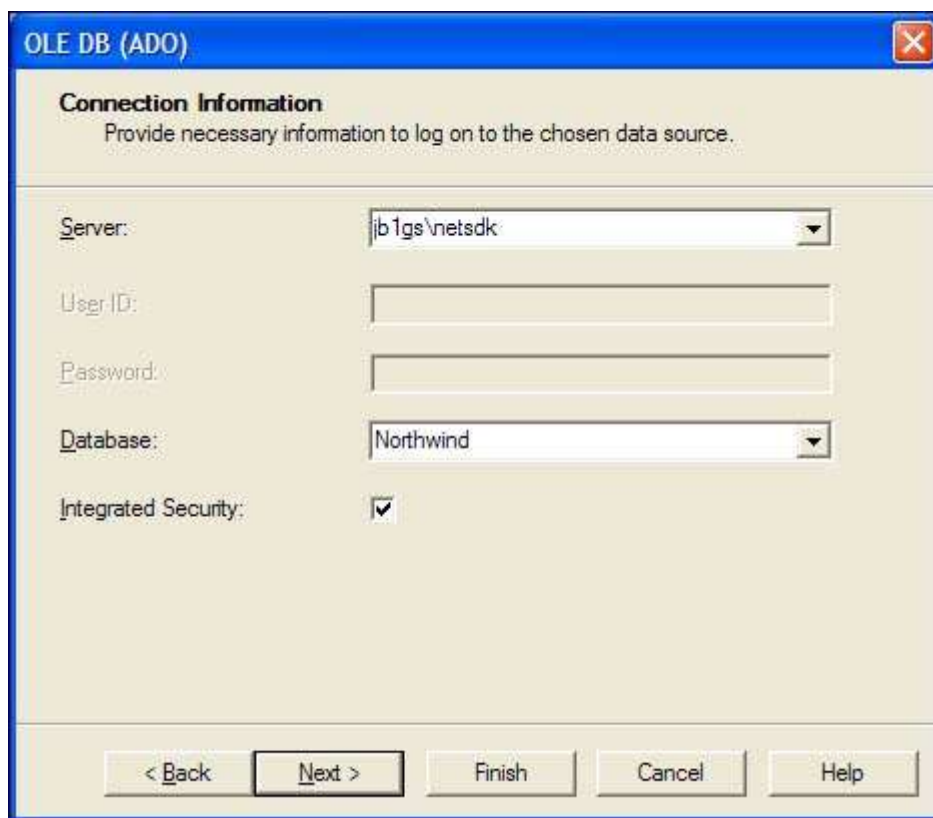
Selecting the OLE DB provider for your report.

By provider we mean the database manager that create and handle the database .



Setting the connection parameters for the OLE DB connection.

Any operation to be performed on data in any database should first ensure that there is an established connection.

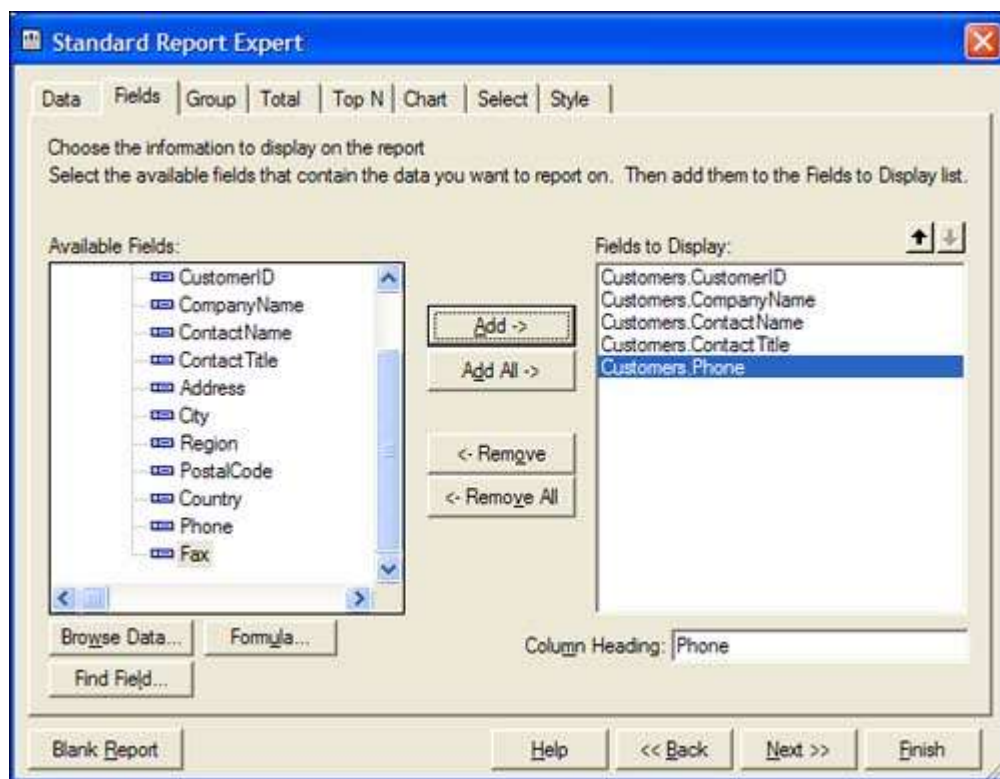


Step 5 : Selecting the Customers table for the report.

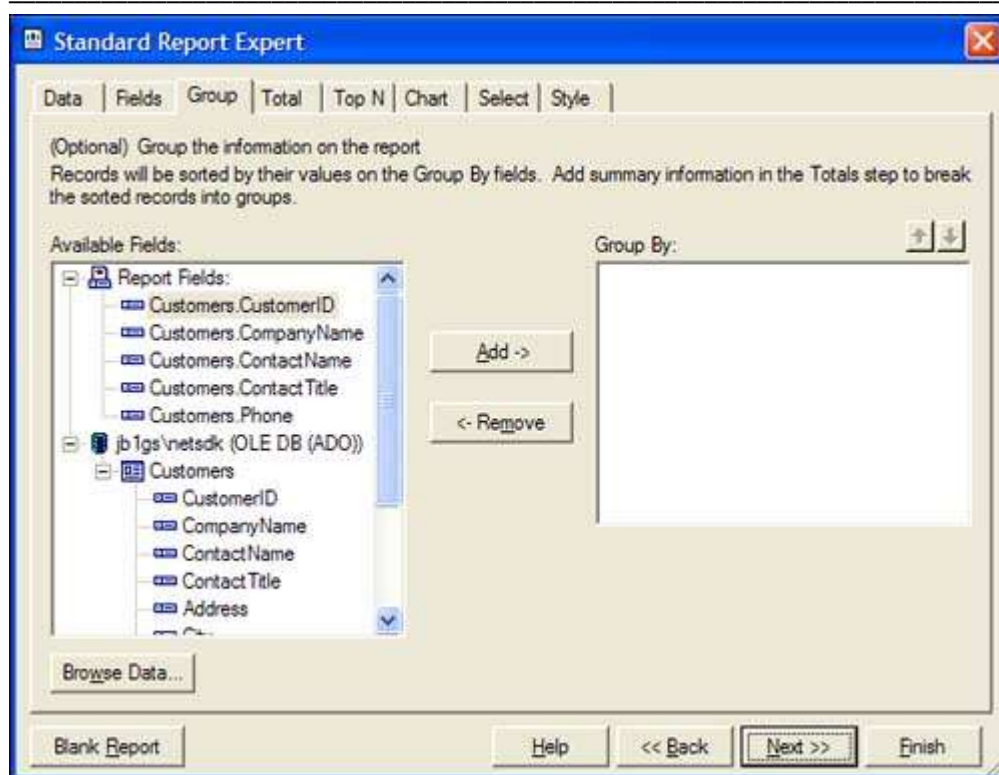
select the Customers table from the Northwind database and click the Insert Table button.



Step 6 :Selecting the bound fields for your report.

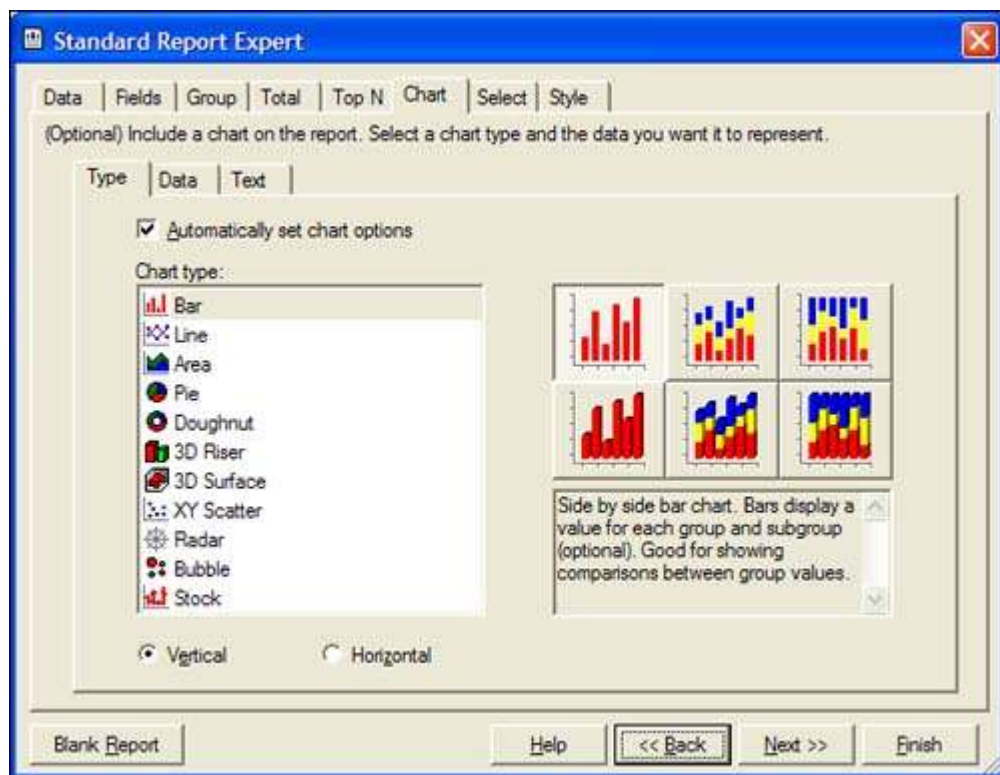


Step 6 :Selecting the Group By field.
Grouping is a simple field selection.



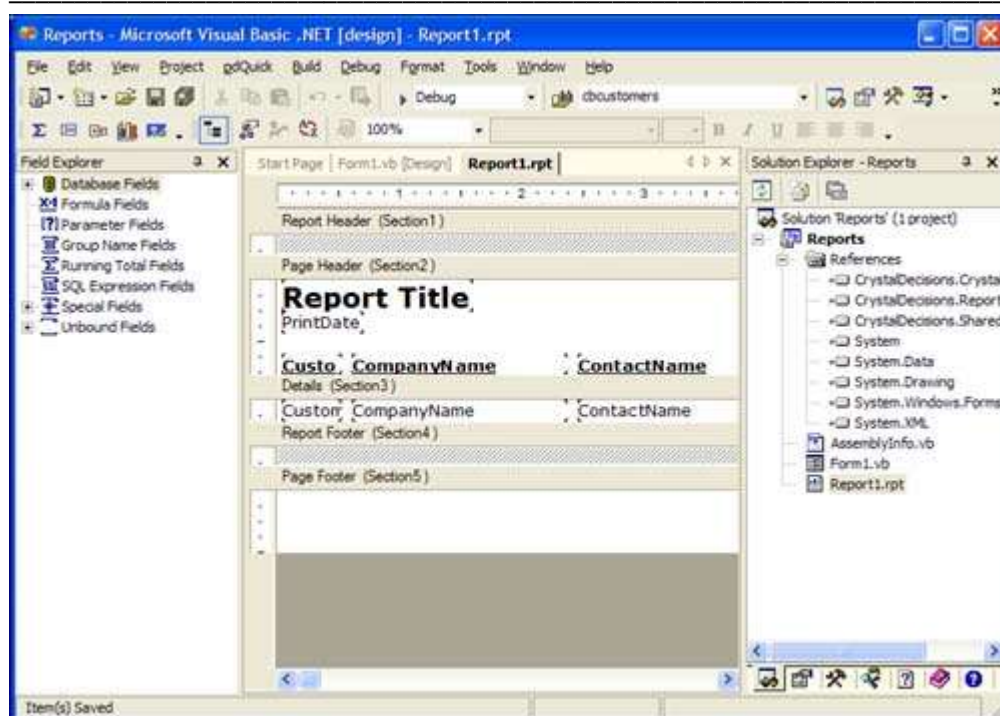
Step 7 :The next optional tab

- **Total tab.**
- **Top N tab.** (Top N, Bottom N, Top Percentage, and Bottom Percentage)
 - If you didn't select any Total fields, the Top N tab won't be available.
- **Charting** (bar, pie, stock, and 3D)



Step 8 : click **finish**, the Expert takes the information you entered and creates your report.

Look in the Solution Explorer, and you'll see that you have a Report1.rpt file.



Now Explore the field explorer

- Database Fields Node
- Formula Fields Node
- Parameter Fields Node
- Group Name Fields Node
- Running Total Fields Node
- SQL Expression Fields Node
- Special Fields Node

This gives you fields that make the report look good. From this node, you can drag any of the fields in the following list to your report to enhance the output:

Data Date	Page Number	File Author
Data Time	Total Page Count	File Path and Name
Record Number	Page N of M	File Creation Date

Using the Windows Forms Report Viewer

- **Add, Add Windows Form.** You can leave the default Form1.vb or Form1.cs name.
- Next, in the Toolbox, drag **CrystalReportViewer** onto your form, and set the **Dock** property to **Fill** so that it resizes with the form.
- New in the **Load** event of your form , Assume that the generated report is called **sqlrp**, then you write ...

```
private void Form1_Load(object sender, System.EventArgs e)
{
    this.sqlDataAdapter1.Fill(this.dataSet1);
    sqlrp report = new sqlrp();
    report.SetDataSource(this.dataSet1);
    this.crystalReportViewer1.ReportSource = report;
}
```

Run

Viewing the Report1.rpt in the report viewer.



Printing a Report Without the Viewer Control

```
private void button1_Click(object sender, System.EventArgs e)
{
    ReportDocument oRpt = new ReportDocument();

    oRpt.Load(@"C:\sqlrp.rpt");

    try
    {
        oRpt.PrintOptions.PrinterName = @"\\myMachine\\hp-color";

        // PrintToPrinter parameters are: # of copies, Collated, Start
        // Page, End Page
        oRpt.PrintToPrinter(1, true, 1, 1);

    }
    catch(Exception err)
    {
        MessageBox.Show(err.ToString());
    }
}
```