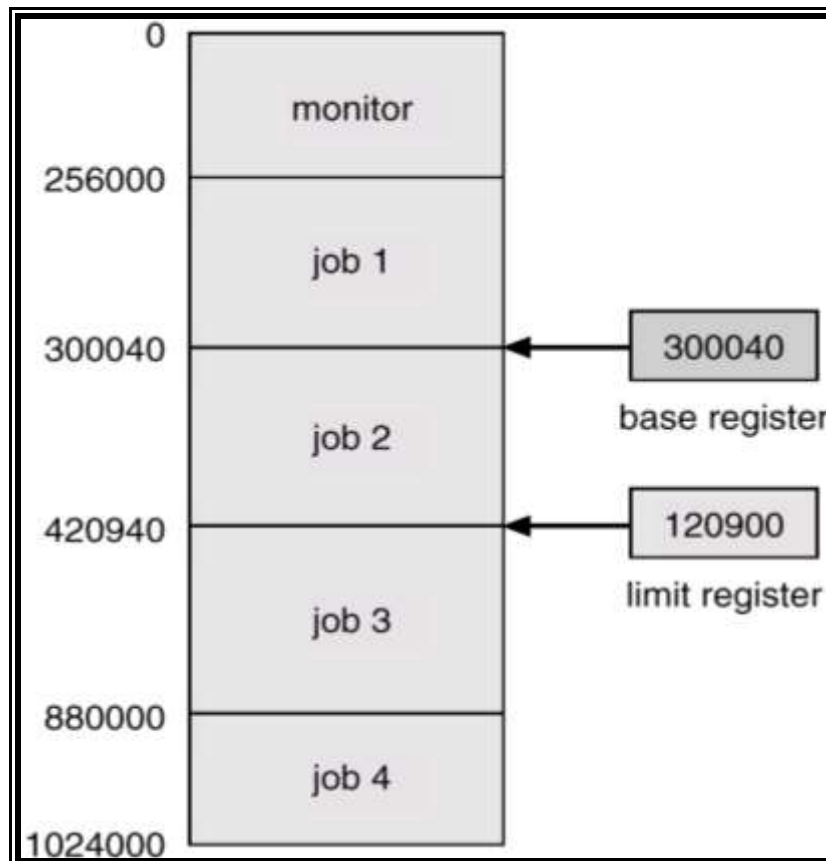
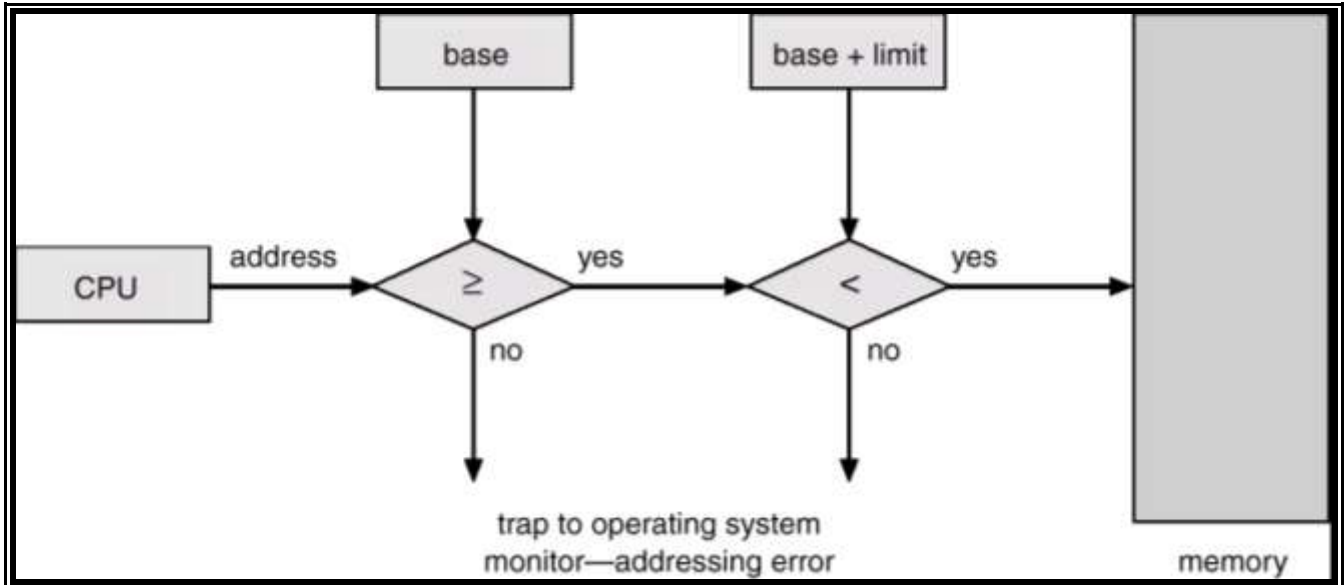




4.3. Memory Protection

- **Base register** – holds the smallest legal physical memory address.
- **Limit register** – contains the size of the range



Consider the following page table:

Page	Base	Length
0	219	600
1	2300	14
2	90	100
3	1327	580
4	1952	96

What are the physical addresses for the following logical addresses?

- a. 0,430
- b. 1,10
- c. 2,500
- d. 3,400
- e. 4,112

Answer:

- a. $219 + 430 = 649$
- b. $2300 + 10 = 2310$
- c. illegal reference, trap to operating system
- d. $1327 + 400 = 1727$
- e. illegal reference, trap to operating system

References

Avi Silberschatz , Operating System Concepts - 8th edition